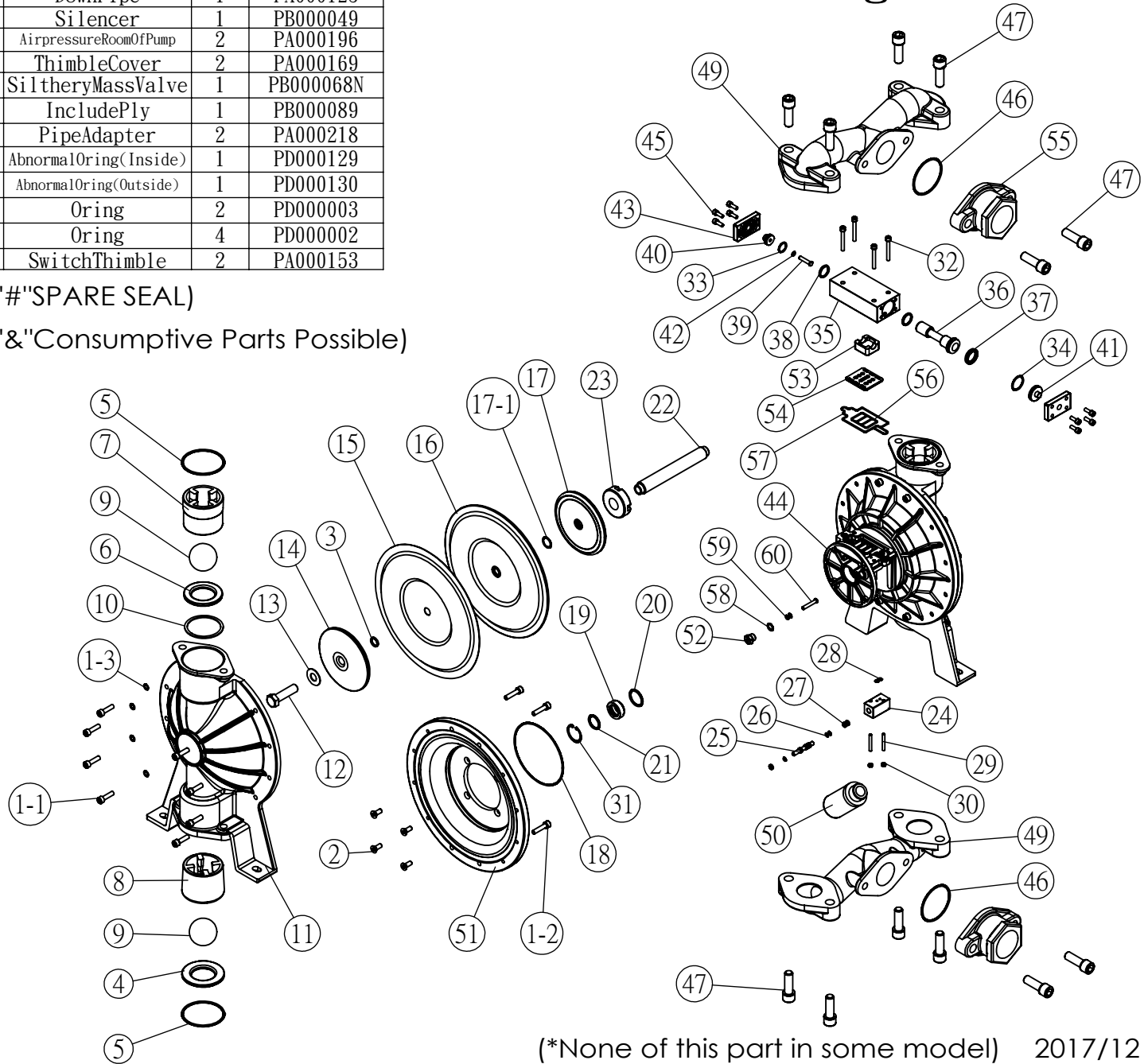


DS20-AAT-XXXX-02 Dissolution Drawing

No.	Component Name	Amount	ComponentNo.
1-1	HexagonScrew	16	PC000019SW
1-2	HexagonScrew	8	PC000106SW
1-3	Flat Washer gasket	20	PC0000057
2	HexagonScrew	8	PC000116
#3	TeflonPad	2	PB000183
&4	DownBallSeat(SUS)	2	PA000020
-	DownBallSeat(PP)	2	PB000115
#5	TeflonOring	4	PB000018
&6	UpBallSeat(SUS)	2	PA000011
-	UpBallSeat(PP)	2	PB000116
&7	UpBallCover(Al)	2	PA000309
-	UpBallCover(PP)	2	PB000117
&8	DownBallCover(Al)	2	PA000310
-	DownBallCover(PP)	2	PB000117
&9	Ball(Teflon)	4	PB000042
-	Ball(Bakelite)	4	PB000204
-	Ball(SUS)	4	PA000007
#10	TeflonPad	2	PB000003
11	HousingOfPump	2	PA000045N
12	SteelHexagonScrew	2	PC000175
13	SteelWasher	2	PC000060
&14	PadOfDiaphragm	2	PA000231
&15	OutSideDiaphragm(PE)	2	PB000027
-	OutSideDiaphragm(Teflon)	2	PB000138
&16	InsideDiaphragm	2	PD000083
17	PadOfDiaphragm	2	PA000232
#17-1	Oring	2	PD000054
#18	Oring	2	PD000031
19	ShaftCover	2	PB000180
#20	Oring	2	PD000008
#21	Oring	2	PD000019
&22	ShaftOfDiaphragm	1	PA000085
23	BufferPad	2	PD000075
&24	BodyOfSquareSwitch	1	PA000111
&25	SwitchPiston	1	PA000144
#26	Oring	3	PD000002
#27	Oring	3	PB000250
#28	Oring	2	PD000016
29	HexagonScrew	2	PC000209
30	CapNut	2	PC000167
&31	C-ShapedRetaining	2	PA000069
32	HexagonScrew	4	PC000032SW
#33	Oring	1	PD000050
#34	Oring	1	PD000015
&35	BodyOfSequential	1	PA000152
&36	PistonOfAirvalve	1	PA000140
#37	U-TypeOring	1	PDAP0032
#38	U-TypeOring	2	PDAP0022
&39	StartingCopperLatch	1	PA000153
40	CoverOfSequentialB	1	PB000102
41	CoverOfSequentialA	1	PB000079
#42	Oring	1	PD000002
43	HousingOfSequential	2	PB000139
44	BodyOfCylinderBase	1	PA000093
45	HexagonScrew	8	PC000013SW
#46	Oring	2	PD000012
47	HexagonScrew	12	PC000073SW
48	UpPipe	1	PA000121
49	DownPipe	1	PA000123
50	Silencer	1	PB000049
51	AirpressureRoomOfPump	2	PA000196
52	ThimbleCover	2	PA000169
&53	SiltheryMassValve	1	PB000068N
&54	IncludePly	1	PB000089
55	PipeAdapter	2	PA000218
#56	AbnormalOring(Inside)	1	PD000129
#57	AbnormalOring(Outside)	1	PD000130
#58	Oring	2	PD000003
#59	Oring	4	PD000002
&60	SwitchThimble	2	PA000153

("#"SPARE SEAL)

("&"Consumptive Parts Possible)



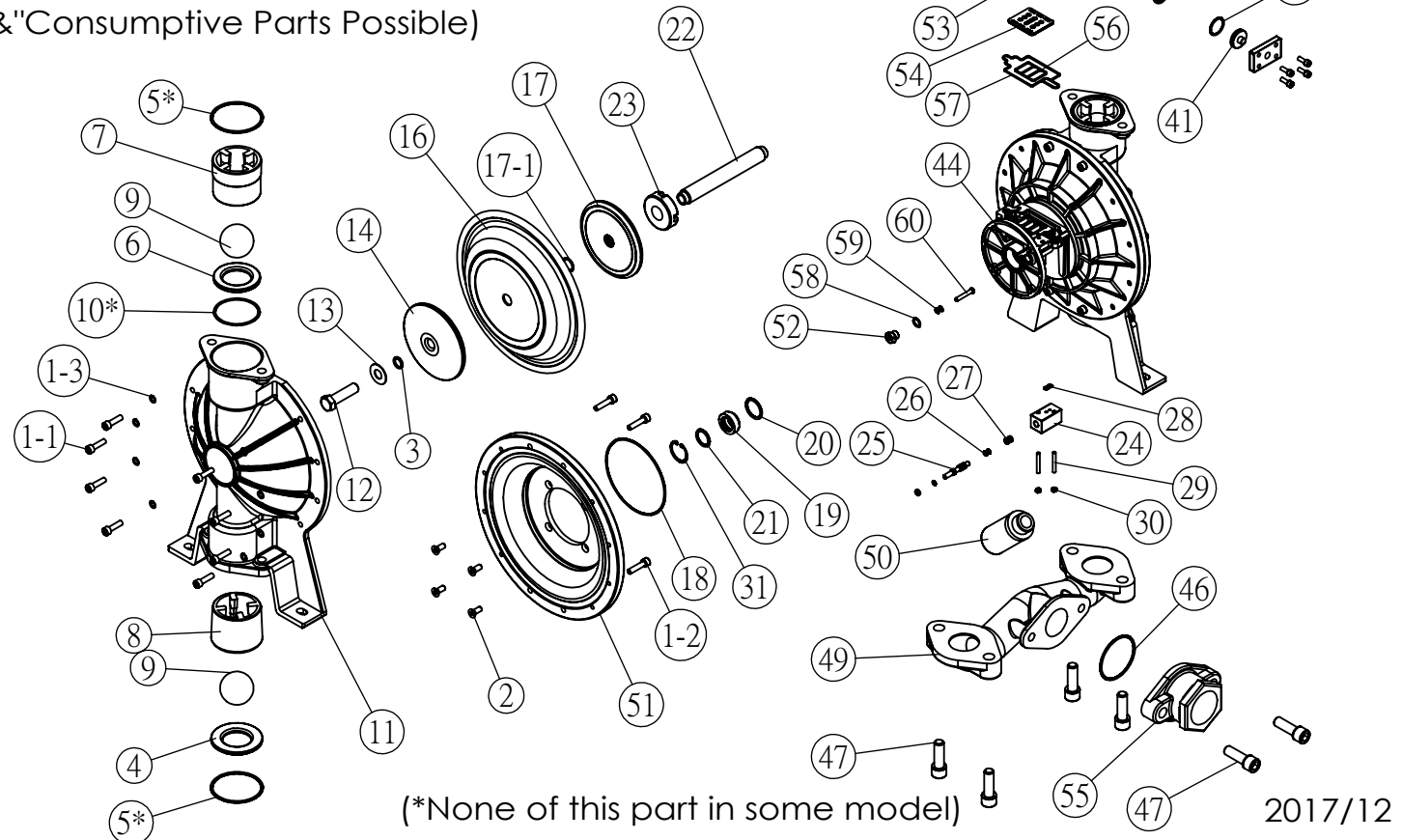
(*None of this part in some model) 2017/12

NO.	Component Name	Amount	ComponentNO.	NO.	Component Name	Amount	ComponentNO.
1-1	HexagonScrew	16	PC000019SW	44	BodyOfCylinderBase	1	PA000093
1-2	HexagonScrew	8	PC000106SW	45	HexagonScrew	8	PC000013SW
1-3	Flat Washer gasket	20	PC000057	#46	Oring	2	PD000012
2	HexagonScrew	8	PC000116	47	HexagonScrew	12	PC000073SW
#3	TeflonPad	2	PB000183	48	UpPipe	1	PA000121
&4	DownBallSeat(STP)	2	PD000065	49	DownPipe	1	PA000123
-	DownBallSeat(PP)	2	PB000115	50	Silencer	1	PB000049
-	DownBallSeat(SUS)	2	PA000020	51	AirpressureRoomOfPump	2	PA000196
#5	Teflon Oring	4	PB000018	52	ThimbleCover	2	PA000169
&6	UpBallSeat(STP)	2	PD000064	&53	SitheryMassValve	1	PB000068N
-	UpBallSeat(PP)	2	PB000116	&54	IncludePly	1	PB000089
-	UpBallSeat(SUS)	2	PA000011	55	PipeAdapter	2	PA000218
&7	UpBallCover(STP)	2	PD000087	#56	AbnormalOring(inside)	1	PD000129
-	UpBallCover(PP)	2	PB000117	#57	AbnormalOring(outside)	1	PD000130
-	UpBallCover(AI)	2	PA000309	#58	Oring	2	PD000003
&8	DownBallCover(STP)	2	PD000088	#59	Oring	4	PD000002
-	DownBallCover(AI)	2	PA000310	&60	SwitchThimble	2	PA000153
-	DownBallCover(PP)	2	PB000117				
&9	Ball(Bakelite)	4	PB000204				
-	Ball(Teflon)	4	PB000042				
-	Ball(SUS304)	4	PA000011				
#10	Teflon Pad	2	PB000003				
12	SteelHexagonScrew	2	PC000175				
13	SteelWasher	2	PC000060				
&14	PadOfDiaphragm	2	PA000231				
&16	Diaphragm	2	PD000084				
17	PadOfDiaphragm	2	PA000232				
#17-1	Oring	2	PD000054				
#18	Oring	2	PD000031				
19	ShaftCover	2	PB000180				
#20	Oring	2	PD000008				
#21	Oring	2	PD000019				
&22	ShaftOfDiaphragm	1	PA000085				
23	BufferPad	2	PD000075				
&24	BodyOfSquareSwitch	1	PA000111				
&25	SwitchPiston	1	PA000144				
#26	Oring	3	PD000002				
#27	Oring	3	PB000250				
#28	Oring	2	PD000016				
29	HexagonScrew	2	PC000209				
30	CapNut	2	PC000167				
&31	C-shapedRetaining	2	PA000069				
32	HexagonScrew	4	PC000032SW				
#33	Oring	1	PD000050				
#34	Oring	1	PD000015				
&35	BodyOfSequential	1	PA000152				
&36	PistonOfAirValve	1	PA000140				
#37	Oring	1	PDAP0032				
#38	Oring	2	PDAP0022				
&39	StartingCopperLatch	1	PA000153				
40	CoverOfSequentialB	1	PB000102				
41	CoverOfSequentialA	1	PB000079				
#42	Oring	1	PD000002				
43	HousingOfSequential	2	PB000139				

DS20-AAT-OXXX-02

Dissolution drawing

("#"SPARE SEAL)
("&"Consumptive Parts Possible)



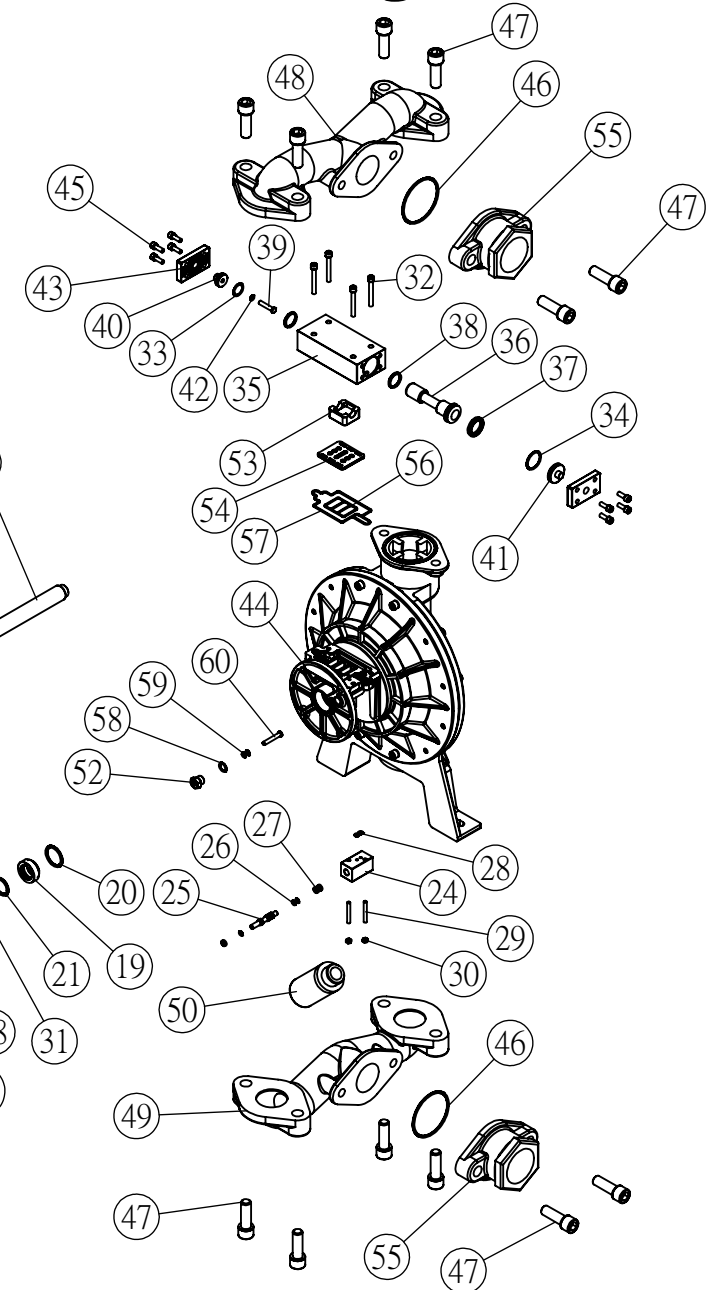
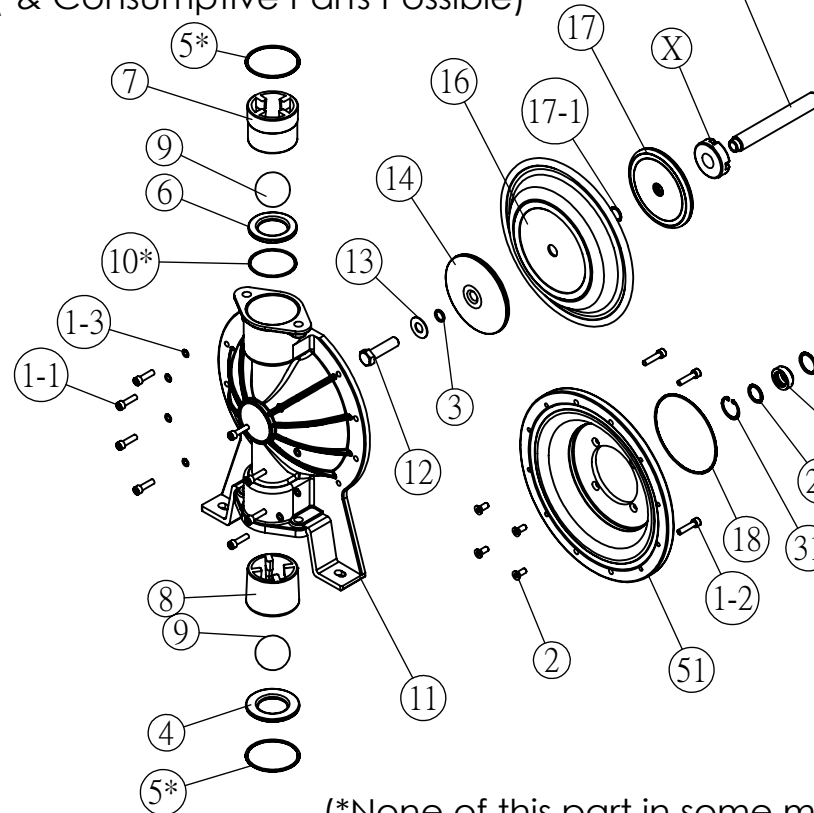
(*None of this part in some model)

NO.	Component Name	Amount	ComponentNO.	NO.	Component Name	Amount	ComponentNO.
1-1	HexagonScrew	16	PC000019SW	44	BodyOfCylinderBase	1	PA000093
1-2	HexagonScrew	8	PC000106SW	45	HexagonScrew	8	PC000013SW
1-3	Ping Hua Division	20	PC000057	#46	Oring	2	PD000012
2	HexagonScrew	8	PC000116	47	HexagonScrew	12	PC000073SW
#3	TeflonPad	2	PB000183	48	UpPipe	1	PA000121
&4	DownBallSeat(STP)	2	PD000065	49	DownPipe	1	PA000123
-	DownBallSeat(PP)	2	PB000115	50	Silencer	1	PB000049
-	DownBallSeat(SUS)	2	PA000020	51	AirpressureRoomOfPump	2	PA000196
#5	Teflon Oring	4	PB000018	52	ThimbleCover	2	PA000169
&6	UpBallSeat(STP)	2	PD000064	&53	SitheryMassValve	1	PB000068N
-	UpBallSeat(PP)	2	PB000116	&54	IncludePly	1	PB000089
-	UpBallSeat(SUS)	2	PA000011	55	PipeAdappter	2	PA000218
&7	UpBallCover(STP)	2	PD000087	#56	AbnormalOring(inside)	1	PD000129
-	UpBallCover(PP)	2	PB000117	#57	AbnormalOring(outside)	1	PD000130
-	UpBallCover(AI)	2	PA000309	#58	Oring	2	PD000003
&8	DownBallCover(STP)	2	PD000088	#59	Oring	4	PD000002
-	DownBallCover(PP)	2	PB000117	&60	SwitchThimble	2	PA000153S
-	DownBallCover(AI)	2	PA000310				
&9	Ball(Bakelite)	4	PB000204				
-	Ball(Teflon)	4	PB000042				
-	Ball (SUS)	4	PA000007				
#10	Teflon Pad	2	PB000003				
11	HousingOfPump	2	PA000045N				
12	SteelHexagonScrew	2	PC000175				
13	SteelWasher	2	PC000060				
&14	PadOfDiaphragm	2	PA000067				
&16	Diaphragm	2	PD000040N				
17	PadOfDiaphragm	2	PA000061				
#17-1	Oring	2	PD000054				
#18	Oring	2	PD000031				
19	ShaftCover	2	PB000180				
#20	Oring	2	PD000008				
#21	Oring	2	PD000019				
&22	ShaftOfDiaphragm	1	PA000085				
&24	BodyOfSquareSwitch	1	PA000111				
&25	SwitchPiston	1	PA000144				
#26	Oring	3	PD000002				
#27	Oring	3	PB000250				
#28	Oring	2	PD000016				
29	HexagonScrew	2	PC000209				
30	CapNut	2	PC000167				
&31	C-shapedRetaining	2	PA000069				
32	HexagonScrew	4	PC000032SW				
#33	Oring	1	PD000050				
#34	Oring	1	PD000015				
&35	BodyOfSequential	1	PA000152				
&36	PistonOfAirValve	1	PA000140				
#37	Oring	1	PDAP0032				
#38	Oring	2	PDAP0022				
&39	StartingCopperLatch	1	PA000153				
40	CoverOfSequentialB	1	PB000102				
41	CoverOfSequentialA	1	PB000079				
#42	Oring	1	PD000002				
43	HousingOfSequential	2	PB000139				

DS20-AAT-OXXX-01

Dissolution drawing

("#"SPARE SEAL)
("&"Consumptive Parts Possible)



(*None of this part in some model)